



The Evolution of Reefer Operations

MCI Reefer Conference 2025

Responsible Use of Resources and End-of-Life Solutions

The Evolution of Reefer Operations
MCI Reefer Conference 2025

The background of the slide is a high-resolution image of Earth as seen from space. The curve of the planet is visible, showing blue oceans, white clouds, and green landmasses. A bright sun is rising or setting on the horizon, creating a lens flare effect with rays of light. The sky is a deep blue with numerous white stars.

Sustainable Container Recycling

MCI Reefer Conference 2025



Stefan van Alphen
ESG director A&M Containers



Kevin Vrooman
Commercial director A&M Containers



Nico van der Have
Founder of A&M

A&M Group is a **recycling company**, operating **internationally**, specialized in **metals, electronics, batteries and reusable materials**.

Through our branded initiative **In2WasteSolutions** we help companies in their journey to a better world by advising and implementing tools about impact on **environment, social and governance** aspects.



FAMILY-OWNED



INNOVATIVE



**SOCIALLY
ENGAGED**



The industry painpoint: end-of-life containers need a smarter end

- **Global Safe Handling**
- **Environmental Accountability**
- **Smart Waste Stream Management**
- **Worker and Community Safety**
- **Circular Economy Leadership**





**Every raw material
is essential to a sustainable future**



How ...

... .. do we prevent waste and loss?
... do we stay resilient in a changing world?

Powered by People, Built on Values, Driven by Impact

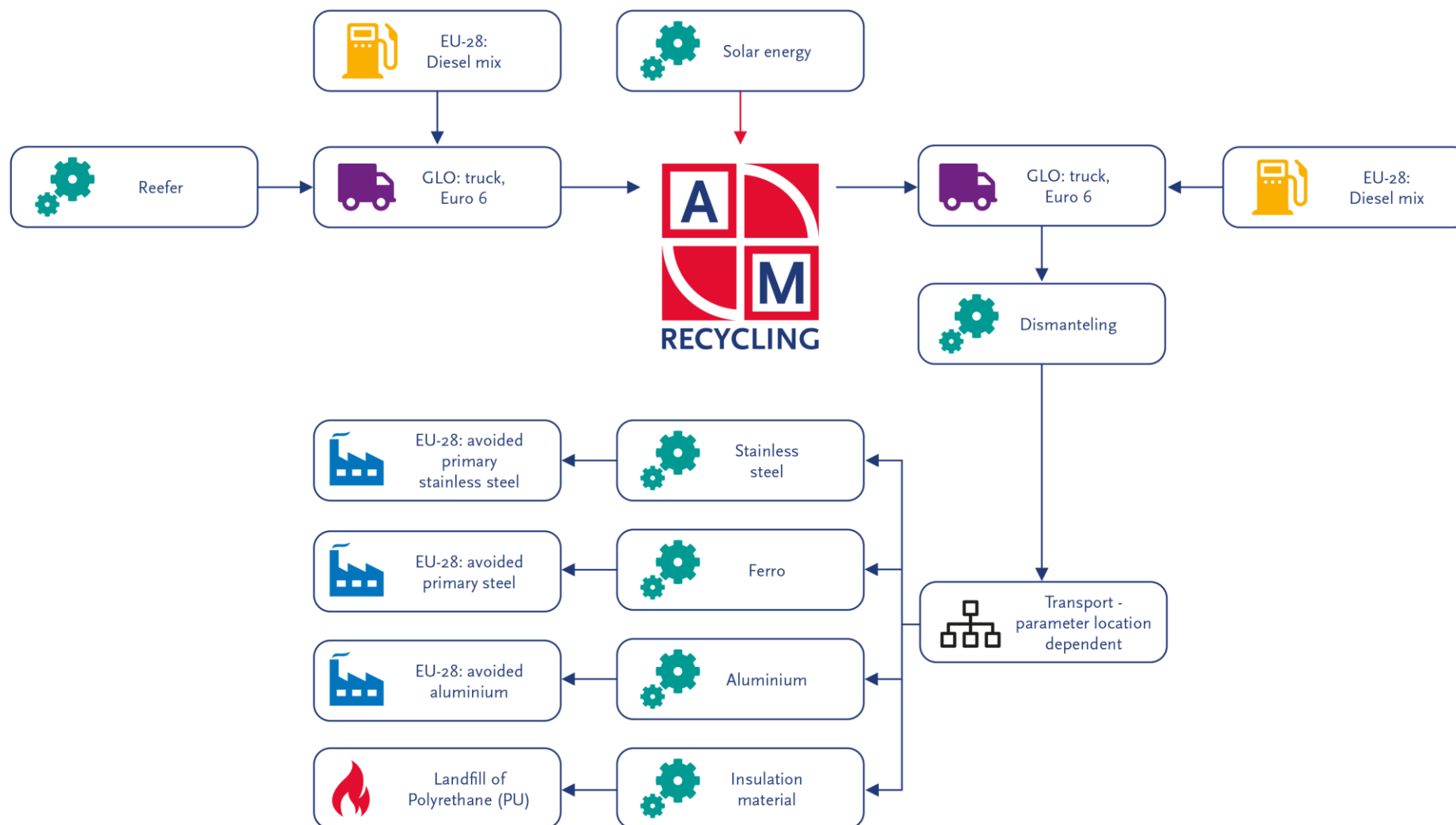
Preserving
RAW Materials

Reducing
environmental
impact

Increasing
social impact

Promoting
innovative
developements











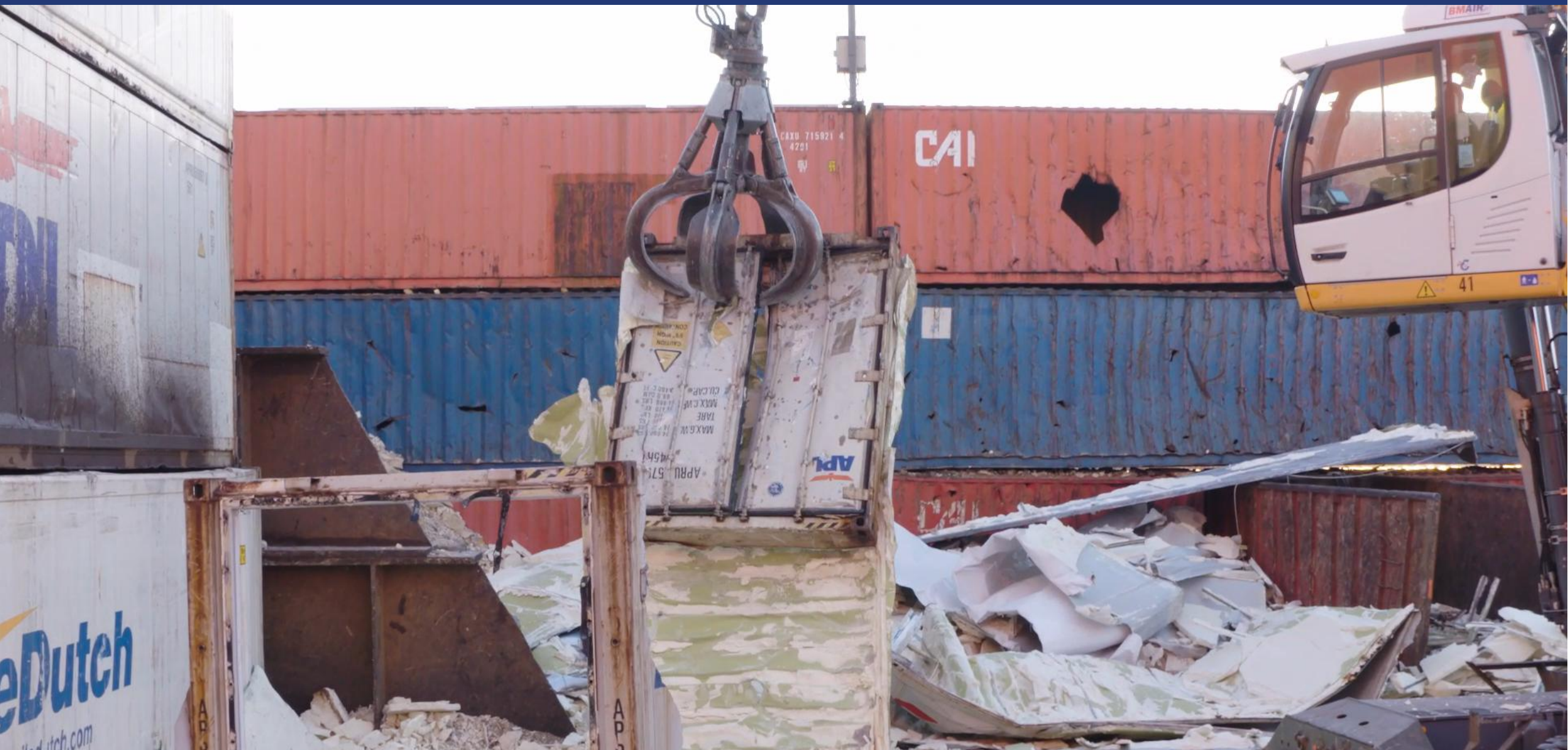














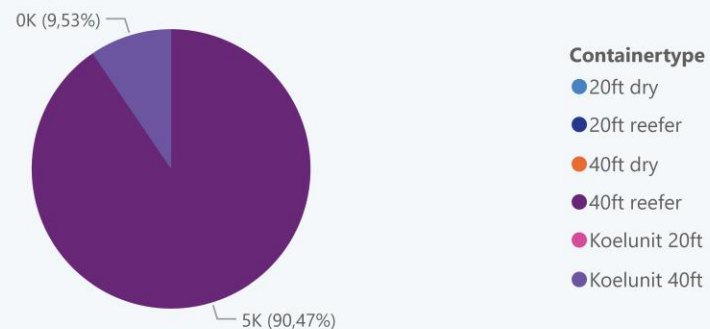




Input Downstream Containers

20ft reefer			40ft reefer			20ft dry			40ft dry		
	Stuks	Koelunit %		Stuks	Koelunit %		Stuks	Koelunit %		Stuks	Koelunit %
	0	0		1	100		0	0		0	0

Totaal Aantal KGs per Container



Recycling (%)

84,7%



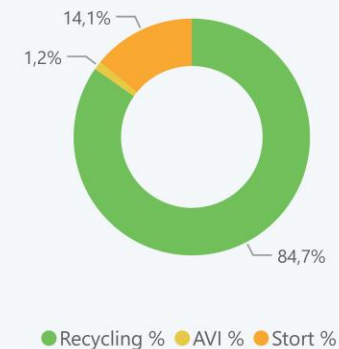
Energy Recovery (KG/%)

1,2%



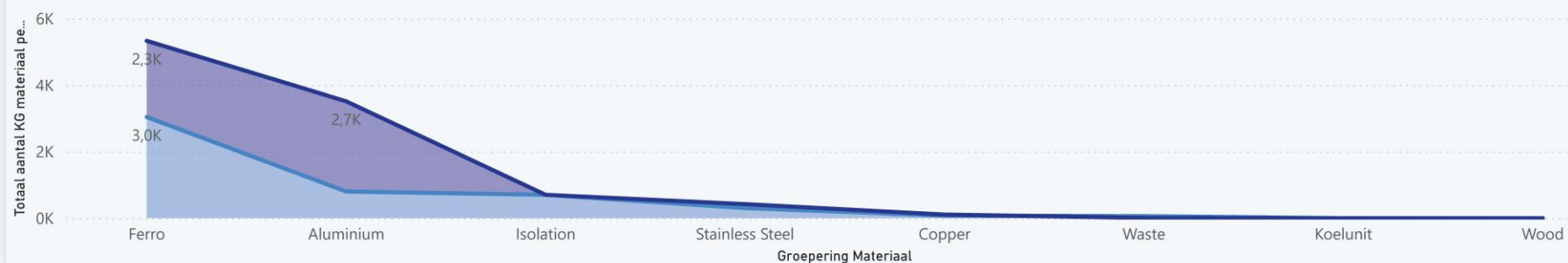
Landfill Disposal (KG/%)

14,1%



Totaal Aantal KGs per Unit

● Totaal aantal KG materiaal per container ● Totale CO2 uitstoot





Downstream Report Containers

Company Name

Alle

Date of Delivery

2025



20ft reefer

Koelunit

Stuks

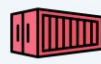
% of total

% of total

0

0,0%

0%



40ft reefer

Koelunit

Stuks

% of total

% of total

1

100,0%

100%



20ft dry

Stuks

% of total

0

0,0%



40ft dry

Stuks

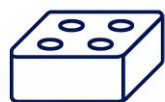
% of total

0

0,0%

Handling	Groepering Materiaal	Locatie	Proces	Grondstof	%	Process 1	Process 2	Output	Output (KG)	R %	ER %	LD %
Transshipment	40ft reefer	NL	Dismantling	Aluminium	75,0%	Cutting	Melting	Aluminium	600	75,0%	0,0%	0,0%
Transshipment	Koelunit 40ft	NL	Dismantling	Aluminium	25,0%	Cutting	Melting	Aluminium	200	25,0%	0,0%	0,0%
Transshipment	Koelunit 40ft	NL	Dismantling	Copper	100,0%	Shredding	Melting	Copper	75	100,0%	0,0%	0,0%
Transshipment	40ft reefer	NL	Dismantling	Ferro	95,4%	Cutting	Melting	Ferro	2.900	95,4%	0,0%	0,0%
Transshipment	Koelunit 40ft	NL	Dismantling	Ferro	4,6%	Cutting	Melting	Ferro	139	4,6%	0,0%	0,0%
Transshipment	Koelunit 40ft	NL	Dismantling	Waste	100,0%	Bulk	Incineration	Heat and Energy	60	0,0%	100,0%	0,0%
Transshipment	40ft reefer	NL	Dismantling	Isolation	100,0%	Dismantling	Disposal	Landfill	700	0,0%	0,0%	100,0%
Transshipment	40ft reefer	NL	Dismantling	Stainless Steel	100,0%	Cutting	Melting	Stainless Steel	300	100,0%	0,0%	0,0%
Totaal					100,0%				4.974	84,7%	1,2%	14,1%

FROM FOAM WASTE TO CIRCULAR RAW MATERIAL



Polyurethaan Foam

Widely used in insulation and furniture, difficult to recycle and often ends up as waste or in incineration



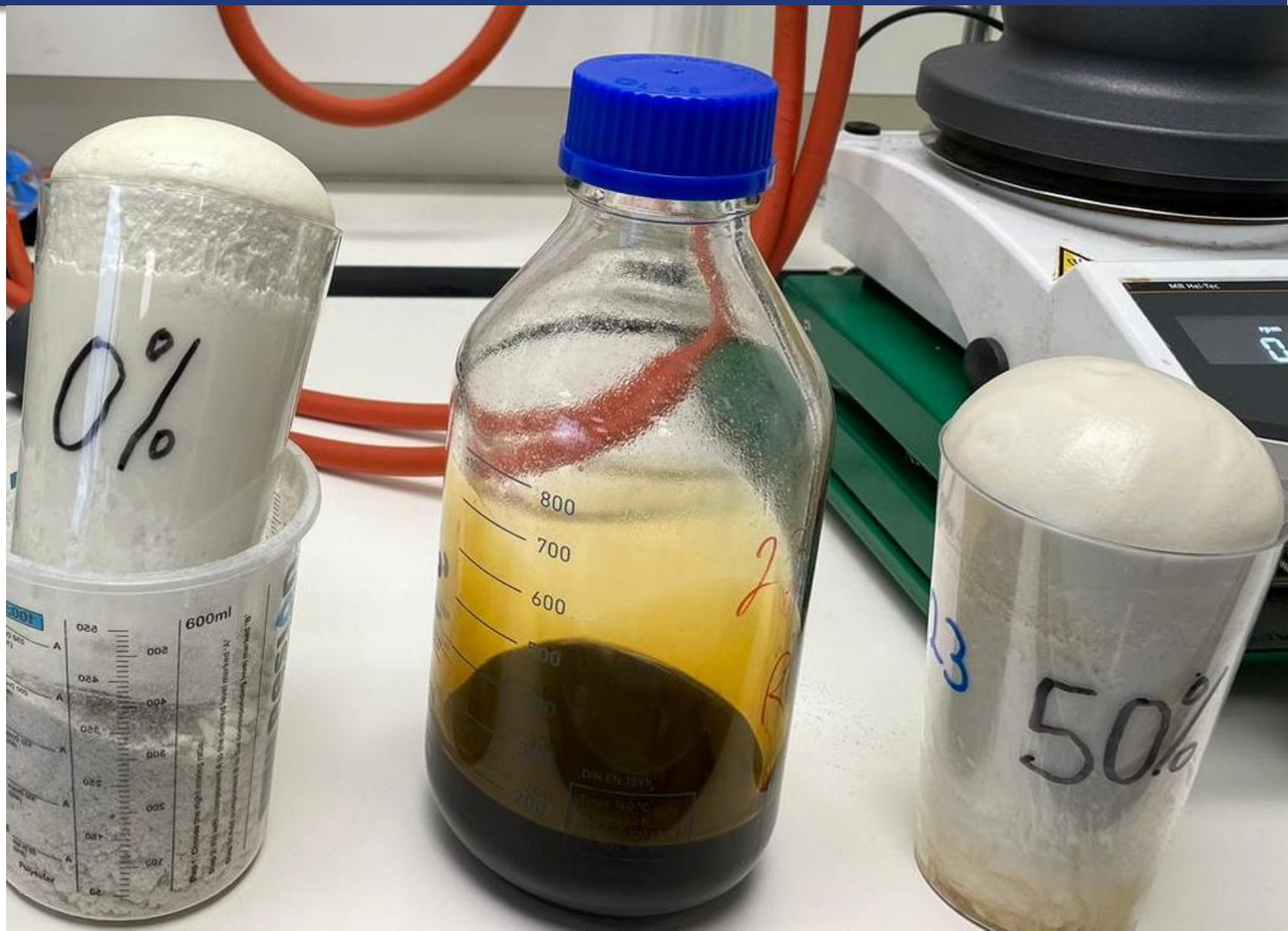
Conversion into Recycled Polyols

Advanced chemical processing transforms the foam into reusable, high-quality raw materials



Closed Circular Loop

Reduces CO₂ emissions and preserves raw materials through circular reuse



Why integrate ESG?

It's not just a reporting obligation – it's a growth strategy. It reveals risks, creates value, and strengthens your license to operate.



Environmental

CO₂ Emissions reduction
Circular Use
Energy Efficiency



Social

Safe Working Conditions
Inclusive Labour Market



Governance

Supply Chain Transparency
Due Diligence
Compliance with regulations
such as CSRD and CSDDD

The value proposition of a ESG-strategy



Creating value

Improved access to capital
(ESG investments are rapidly growing)

**Stronger customer relationships through
shared sustainability values**

**Better employee retention and increased
appeal to young talent**



Opportunities

Supply Chain Leadership:
Innovation driven by environmental impact

Market Differentiation:
Demonstrate accountability and leadership

Risk without a ESG-vision

- **Loss of Market Position:**
Major clients (OEMs, governments, energy companies) are raising their standards.
- **Legal Risks:**
CSRD, CSDDD, EU Taxonomy – compliance is becoming a license to operate.
- **Reputational Damage:**
Greenwashing is increasingly penalized.
- **Operational Risks:**
Resource scarcity and unexpected cost increases.



