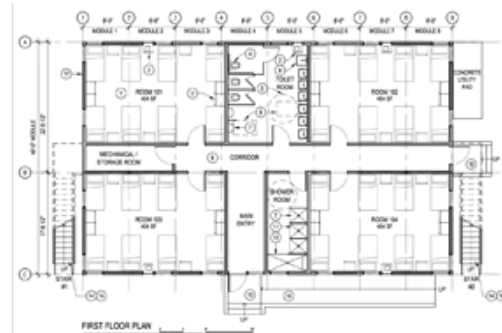


FOR IMMEDIATE RELEASE

Contact: Kevin Speers or Celine Gordon
Direct: 757-531-7873

Maersk Line, Limited and Intermodal Structures Announce Strategic Partnership to Market Modular Building Systems

ARLINGTON, Va., September 20, 2010: Maersk Line, Limited and two other A.P. Moller – Maersk companies have entered into a strategic partnership with Intermodal Structures, Inc. (IMS) to design, manufacture, market and deliver an innovative modular building system. This unique, customizable building can be assembled and transported rapidly and cost-effectively anywhere in the world using its intermodal frame. Featuring sturdy construction, seismic and hurricane resistance, it is especially well suited for locations where conventional construction is not feasible or practical.



64-man worker dormitory building concept

Unlike traditional modular construction, the IMS all-steel buildings ensure that the structures retain their dimensional tolerances making it ideal for multiple redeployments. The buildings are multipurpose - from military compounds, classrooms, medical centers or offices to utilitarian and relief housing. They can be as sophisticated or as basic as customers need them to be.

The modules meet or exceed stringent international building codes and are built by Maersk Container Industries, one of the world's leading producers of modular units. Damco, the logistics company with the A.P. Moller – Maersk Group, will provide transportation support.

“The partnership brings together Intermodal Structures’ groundbreaking building system and Maersk’s global shipping, logistics and manufacturing capabilities to create a unique, transportable building solution.” said John F. Reinhart, President and CEO of Maersk Line, Limited.

A fully functioning two-story office facility will be unveiled at the annual National Defense Transportation Association (NDTA) Forum at the Gaylord National Harbor Hotel near Washington D.C. on September 20, 2010. After the show, the 6-unit building will be moved to APM Terminals in Portsmouth, Virginia where it will be used as an on-terminal operations center.



Inside a modular building

For more information, contact Greg Moore, Vice President, Business Development, Maersk Line, Limited via email at gmoore@mllnet.com.

About Maersk Line, Limited

Maersk Line, Limited is an American company, based in Norfolk, Virginia, that provides U.S. flag transportation, ship management and technical services to government and commercial customers. As a business within the A.P. Moller-Maersk Group, our customers rely on our unparalleled experience, maritime expertise and global intermodal capability. We seek everyday to build greater trust in our maritime and transportation services and to strengthen the partnership with our customers for years to come. Please visit www.maersklinelimited.com for more information.

About Intermodal Structures, LLC

Intermodal Structures designs, manufactures, transports, installs and commissions sophisticated, steel-framed buildings delivered intermodally to any location in the world. See additional details about IMS at <http://www.intermodalstructures.com/>